

Model: Kir-C		Date: 18-Sep-02	No.: RB040025
Subject: ROM History (Kir-C1 Printer NIB Option)		Prepared by: M.Mano	
From: Technical Services sec. Service Planning Dept.			
Classification:	<input type="checkbox"/> Troubleshooting <input type="checkbox"/> Part information <input type="checkbox"/> Action required <input type="checkbox"/> Mechanical <input type="checkbox"/> Electrical <input type="checkbox"/> Service manual revision <input type="checkbox"/> Paper path <input type="checkbox"/> Transmit/receive <input checked="" type="checkbox"/> Retrofit information <input type="checkbox"/> Other (      )		

We hereby inform you of firmware history for the Kir-C1 Printer NIB Option.

B4305000	Version	C.SUM	Production
-	6.19	B2AA	1st Mass Prod.
<b>A</b>	<b>6.29c</b>	<b>A297</b>	<b>September Prod. '02</b>

Symptom Corrected	Suffix
<b><i>IP Protocol can now be Enabled or Disabled in the Web browser.</i></b>	<b>A</b>
<b><i>You can change the SNMP Community Name and enable/disable SNMP port after updating firmware according to the following procedure.</i></b>  <b><i>1) Type "http://&lt;IP address&gt;/tcpipenables" into URL Web browser or use MAP</i></b> <b><i>2) Change or confirm the check box of each port or input the community name</i></b> <b><i>3) Click the "Accept Settings" button after inputting the password (the default password is "sysadm")</i></b> <b><i>4) Return to home and reset or recycle the power</i></b> <b><i>5) Your settings will be reflected</i></b> <b><i>See the next page "Appendix".</i></b>  <b><i>NOTE: After setting HTTP disable, you cannot access the target device through a web browser or MAP. If you want to change the settings, please set "Restore Factory Defaults" by telnet. When "telnet" port is set to disable, please change the jumper pin on board to set "Factory Defaults".</i></b>	<b>A</b>
<b><i>Change in Specification:</i></b> <b><i>※ SNMP vulnerability:</i></b> <b><i>SNMP security vulnerabilities reported by CERT on Feb.12, 2002 have been resolved and verified using the PROTOS c06-snmpv1 test suite.</i></b>  <b><i>-CERT: <a href="http://www.cert.org/advisories/CA-2002-03.html">http://www.cert.org/advisories/CA-2002-03.html</a></i></b> <b><i>-PROTOS c06-snmpv1 test suite:</i></b> <b><i><a href="http://www.ee.oulu.fi/research/ouspg/protos/testing/c06/snmpv1/">http://www.ee.oulu.fi/research/ouspg/protos/testing/c06/snmpv1/</a></i></b>	<b>A</b>
<b><i>SAP interval time can now be adjusted.</i></b>	<b>A</b>
<b><i>Supports connection with NetWare6.</i></b>	<b>A</b>

Model: Kir-C

Date: 18-Sep-02

No.: RB040025

## Appendix

RICOH Aficio 1013/RICOH Network Printer D Model-TCP/IP Services Configuration Menu - Microsoft Internet Explorer

File Edit View Favorites Tools Help

Back Forward Stop Home Search Favorites History Print

Address http://133.139.166.227/tcpipenables Go Links »

---

## RICOH Aficio 1013/RICOH Network Printer D Model

---

Unit Serial Number 980206

---

### TCP/IP Services Configuration Menu

---

**LPD Settings**  
 Enable LPD: ☒

**Enable TCP/IP Services**  
☒ HTTP ☒ IPP ☒ SNMP ☒ Telnet ☒ FTP ☒ Raw Sockets

SNMP Read/Write Community Name:

SNMP Read Community Name:

**A password is required to perform this function.**

Done Local intranet

Model: NIB450e		Date: 20-Dec-02	No.: RA855004
Subject: FTPDL V1.50a		Prepared by: Y.Urushihara	
From: Technical Services sec. Service Planning Dept.			
Classification:	<input type="checkbox"/> Troubleshooting <input type="checkbox"/> Part information <input type="checkbox"/> Action required <input type="checkbox"/> Mechanical <input type="checkbox"/> Electrical <input type="checkbox"/> Service manual revision <input type="checkbox"/> Paper path <input type="checkbox"/> Transmit/receive <input type="checkbox"/> Retrofit information <input checked="" type="checkbox"/> Other (      )		

## FTP Download Version 1.50a

### <System Requirements>

Windows95/98/Me/2000/NT/XP  
TCP/IP protocol installed

### <Target Models>

NIB 450E  
NIB Type2000  
NIB Type1018

### <Target firmware>

- ✓ Rewriting possible.
- ✦ Rewriting possible, but the printer needs to be rebooted.
- Rewriting not possible.

NIB 450E		To:					
		V2.38	V2.46	V2.49	V2.52b	V4.01a	V4.02b
From:	V2.38	✓	✓	✓	✓	✦	✦
	V2.46	✓	✓	✓	✓	✦	✦
	V2.49	✓	✓	✓	✓	✦	✦
	V2.52b	✓	✓	✓	✓	✦	✦
	V4.01a	---	---	---	---	✓	✓
	V4.02b	---	---	---	---	✓	✓

NIB Type2000		To:		
		V5.38	V5.65a	V5.72b
From:	V5.38	✓	✓	✓
	V5.65a	✓	✓	✓
	V5.72b	✓	✓	✓

Model: NIB450e	Date: 20-Dec-02	No.: RA855004
----------------	-----------------	---------------

NIB Type1018		To:		
		V6.18	V6.19	V6.27a
From:	V6.18	✓	✓	✓
	V6.19	✓	✓	✓
	V6.27a	✓	✓	✓

## <Testing complete on following firmware versions>

[NIB 450E]

v2.38, v2.46, v2.49, v2.52b, v4.01a, v4.02b

[NIB Type2000]

v5.38, v5.65a, v5.72b

[NIB Type1018]

v6.18, v6.19, v6.27a

## <Download Procedure>

**Important:** Make sure the printer main power is off before beginning.

1. Connect the PC to the NIB.

Both LAN and direct cross-cable connection are possible. However, if using a LAN connection, it is best to choose an environment with low network traffic.

2. Uninstall the firmware currently installed (if a FTPDL file is present).

3. Run the self-extracting file FTPDL150a.EXE, then specify the directory you wish to extract the file to.

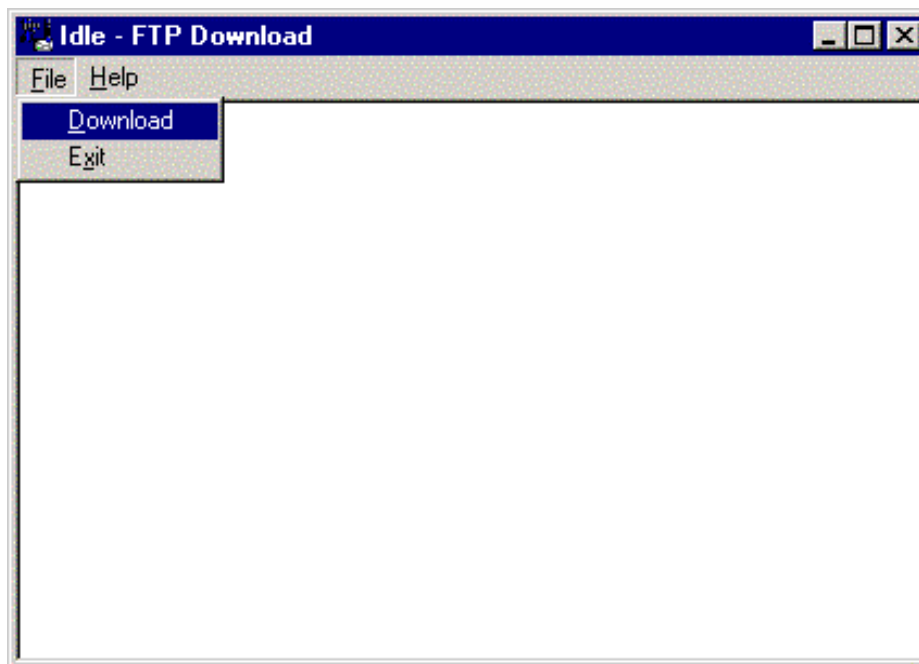
4. Run SETUP.EXE, located inside the self-extracting file above to begin the installation.

**Note:** For multi-OS environments, it is necessary to specify one operating system for the installation.

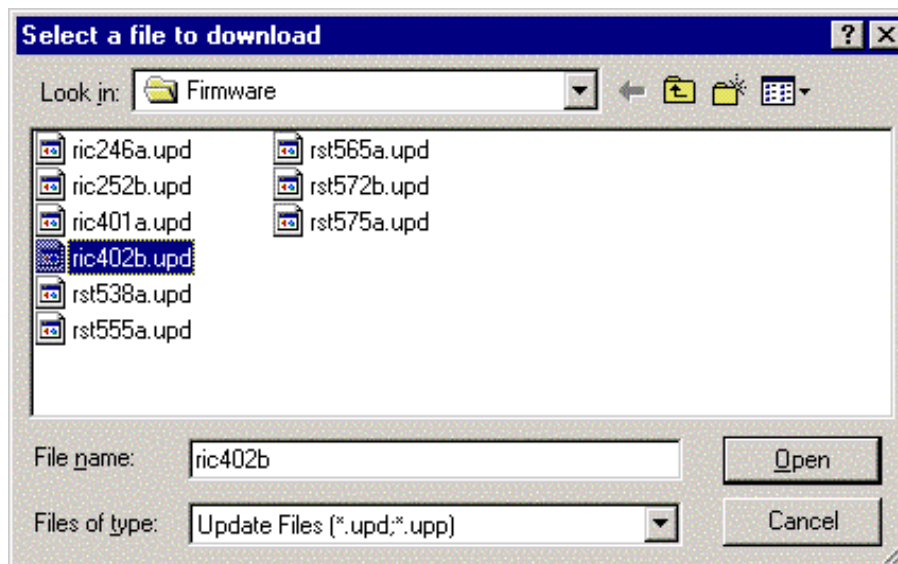
5. Turn on the printer main power and wait until it has booted up completely. If the NIB status sheet print has been activated, please wait until this sheet is printed out.

6. Enable TCP/IP for the target NIB.

7. Run FTPDL150a and click [File] – [Download]



8. Select the UPD firmware file and click [Open]



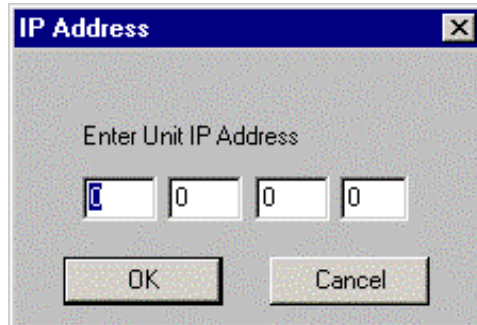
Model: NIB450e

Date: 20-Dec-02

No.: RA855004

9. Input the target IP address

10. Input the target password ("sysadm").



**Important:** For Steps 11-13, please:

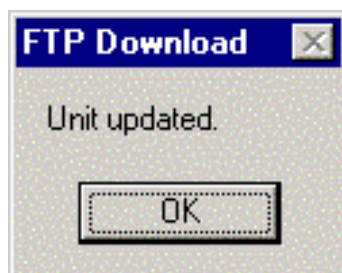
- Do not turn on the machine main power
- Do not send any print data to the machine
- Do not access an http:// internet page.
- Do not connect with TELNET or FTP

11. The machine will display "Downloading NIC Update Program [BIN] to NIC", and begin downloading the BIN file. This will take about 2 minutes, during which time the panel will show how much has been completed (%).

12. The display will then change to "Downloading Flash Update File [UPD] to NIC", and the machine will begin downloading the UPD file. This will take about 3 minutes, during which time the panel will show how much has been completed (%).

13. After the UPD file download has been completed, the machine will display "Unit updated", and will then begin formatting the NIB. Please wait for this to finish (at least 2 minutes), and if NIB status sheet printing has been activated, please wait for the sheet to be printed out.

**Important:** Since a firmware update also overwrites the actual program that brings the firmware on line (booting program), if the power is turned off before the 2 minutes are up, the machine will in most cases not come back on line (not recover). Therefore it is very important to wait the 2 minutes after the "unit updated" message is displayed."



Model: NIB450e

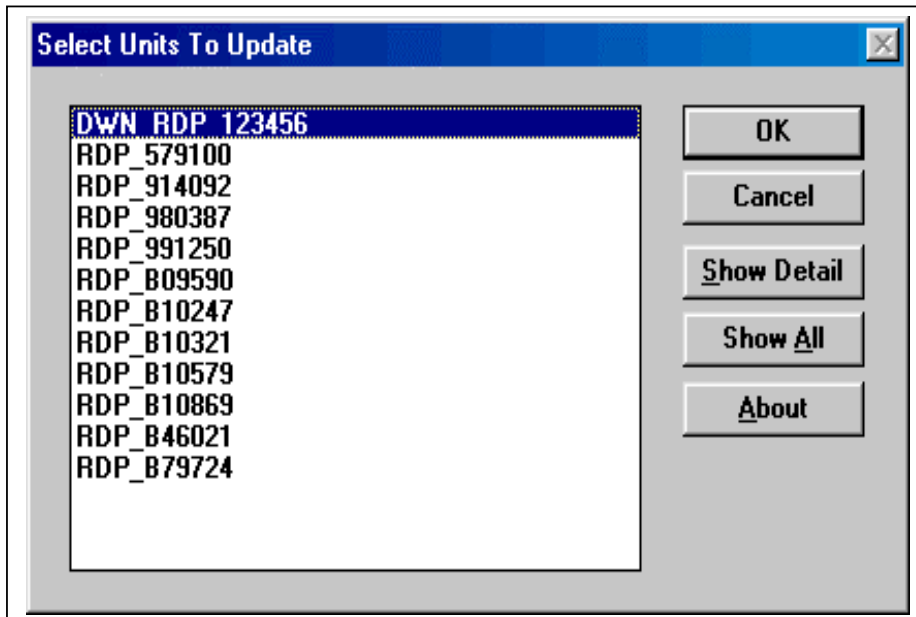
Date: 20-Dec-02

No.: RA855004

## <Recovery Method>

**Important:** Make sure the printer main power is off before beginning.

1. Remove the NIB, then move the jumper pin to the ON position ("BYPASS").
2. Reattach the NIB and turn on the printer main power.
3. Run the FlashUp tool and select the firmware (UPD file).
4. In the following screen, confirm that the NIB is displayed (DWN\_RDP\_xxxxxx). If it is not, recovery cannot be performed using this tool, and the NIB will need to be reprogrammed by the manufacturer (NetSilicon).
5. Select the NIB and click OK. The update will then be performed automatically.



6. After the update is completed, return the NIB jumper pin to its original position (OFF). Then, turn on the printer main power.

Model: NIB450e

Date: 20-Dec-02

No.: RA855004

**<Limitations>**

1. It is not possible to rewrite NIB 450E firmware v4.xx or newer with v2.xx or older.
2. After upgrading from v2.xx to v4.xx, it is necessary to reboot the printer.
3. It is very rare for the panel display to freeze while the download is in progress.  
However, even if this should happen, it is possible that the download itself is still proceeding normally. Therefore please wait 4-5 minutes before rebooting the machine.



Reissued: 2-Jul-03

Model: Kir-C	Date: 18-Sep-02	No.: RB040025a
--------------	-----------------	----------------

## RTB Correction

The items in bold italics have been corrected or added.

Subject: ROM History (Kir-C1 Printer NIB Option)		Prepared by: M.Mano	
From: 1st Tech. Support Sec. Service Support Dept.			
Classification:	<input type="checkbox"/> Troubleshooting <input type="checkbox"/> Mechanical <input type="checkbox"/> Paper path <input type="checkbox"/> Other (       )	<input type="checkbox"/> Part information <input type="checkbox"/> Electrical <input type="checkbox"/> Transmit/receive	<input type="checkbox"/> Action required <input type="checkbox"/> Service manual revision <input checked="" type="checkbox"/> Retrofit information

We hereby inform you of firmware history for the Kir-C1 Printer NIB Option.

B4305000	Version	C.SUM	Production
-	6.19	B2AA	1st Mass Prod.
A	6.29c	A297	September Prod. '02
<b><i>B</i></b>	<b><i>6.31as</i></b>	<b><i>8EAC</i></b>	<b><i>June Prod. '03</i></b>

Symptom Corrected	Suffix
<b><i>Modified so that the SNMP read community name can be changed in Batch Configuration (Web SmartNetMonitor).</i></b>	<b><i>B</i></b>
<b><i>Removed IP address acquisition method ARP+PING.</i></b>	<b><i>B</i></b>

**Reissued: 2-Jul-03**

Model: Kir-C	Date: 18-Sep-02	No.: RB040025a
--------------	-----------------	----------------

Symptom Corrected	Suffix
IP Protocol can now Enabled or Disabled in the Web browser.	A
<p>You can change the SNMP Community Name and enable/disable SNMP port after updating firmware according to the following procedure.</p> <p>1) Type "http://&lt;IP address&gt;/tcpipenables" into URL Web browser or use MAP  2) Change or confirm the check box of each port or input community name  3) Click "Accept Settings" button after inputting password (default password is "sysadm")  4) Return to home and reset or recycle the power  5) Your settings will be reflected  See next page "Appendix".</p> <p>NOTE: After setting HTTP disable, you cannot access the target device through web browser or MAP. If your want to change the settings, please set "Restore Factory Defaults" by telnet. When "telnet" port is set to disable, please change the jumper pin on board to set "Factory Defaults".</p>	A
<p>Change in Specification:</p> <p>※ SNMP vulnerability:  SNMP security vulnerabilities reported by CERT on Feb.12, 2002 have been resolved and verified using the PROTON c06-snmpv1 test suite.</p> <p>-CERT: <a href="http://www.cert.org/advisories/CA-2002-03.html">http://www.cert.org/advisories/CA-2002-03.html</a>  -PROTON c06-snmpv1 test suite:  <a href="http://www.ee.oulu.fi/research/ouspg/protos/testing/c06/snmpv1/">http://www.ee.oulu.fi/research/ouspg/protos/testing/c06/snmpv1/</a></p>	A
SAP interval time can now be adjusted.	A
Supports connection with NetWare6.	A

**Reissued: 2-Jul-03**

Model: Kir-C

Date: 18-Sep-02

No.: RB040025a

**Appendix**

The screenshot shows a web browser window titled "RICOH Aficio 1013/RICOH Network Printer D Model-TCP/IP Services Configuration Menu - Microsoft Internet Explorer". The address bar shows "http://133.139.166.227/tcpipenables". The main content area displays the following information:

**RICOH Aficio 1013/RICOH Network Printer D Model**

Unit Serial Number 980206

**TCP/IP Services Configuration Menu**

**LPD Settings**  
Enable LPD: ☒

**Enable TCP/IP Services**  
☒ HTTP ☒ IPP ☒ SNMP ☒ Telnet ☒ FTP ☒ Raw Sockets

SNMP Read/Write Community Name:

SNMP Read Community Name:

**A password is required to perform this function.**

The status bar at the bottom shows "Done" and "Local intranet".